

Monthly Operations Report for December 2025 at KLU

Operations

	Dec 2025	Dec 2024	Year over Year Change
TRANSITION	64	47	36.2%
TOUCH & GO	177	107	65.4%
TAKEOFF	383	219	74.9%
LANDING	401	208	92.8%
GO AROUND	29	25	16.0%
FLYOVER	13	3	333.3%
Totals	1196	691	73.1%

NOTE: FLYOVER and TRANSITION are excluded from the total operations count.
Operations classified as TOUCH & GO and GO AROUND are counted as two distinct operations, a landing and a takeoff respectively.

Aircraft Type

	Dec 2025	Dec 2024	Year over Year Change
Rotorcraft	2	0	-
Fixed wing single engine	1107	608	82.1%
Fixed wing multi engine	57	42	35.7%
Unknown	30	41	-26.8%

Engine Type

Turbo-shaft	2	0	-
Turbo-prop	50	51	-2.0%
Turbo-fan	0	1	-100.0%
Reciprocating	1053	495	112.7%
4 Cycle	61	102	-40.2%
2 Cycle	0	1	-100.0%
Unknown	30	41	-26.8%

Number of Engines

1	1109	608	82.4%
2	57	42	35.7%
Unknown	30	41	-26.8%

Average Daily Operations

Monday	29	19	52.6%
Tuesday	40	24	66.7%
Wednesday	52	12	333.3%
Thursday	45	35	28.6%
Friday	27	40	-32.5%

Monthly Operations Report for December 2025 at KLU

Operations			
	Dec 2025	Dec 2024	Year over Year Change
Saturday	65	33	97.0%
Sunday	28	18	55.6%
Average per weekday	39	26	50.0%
Average per weekend	47	26	80.8%
Local vs. Transient			
Local	0	0	0.0%
Transient	1196	691	73.1%
Nights Stayed	110	59	86.4%
Seats on Overnight Aircraft	619	330	87.6%
Overnight Visitors @ 50%	309.5	165	87.6%
Runways			
RWY 09 GO AROUNDs	12	20	-40.0%
RWY 09 LANDINGS	123	74	66.2%
RWY 09 TAKEOFFs	112	83	34.9%
RWY 09 TOUCH & GOs	72	94	-23.4%
RWY 09 Total	319	271	17.7%
RWY 27 GO AROUNDs	46	30	53.3%
RWY 27 LANDINGS	277	133	108.3%
RWY 27 TAKEOFFs	270	134	101.5%
RWY 27 TOUCH & GOs	252	90	180.0%
RWY 27 Total	845	387	118.3%

Monthly Operations Report for December 2025 at KLU

	Jan 2024	Jan 2023	Year over Year Change
Weight Class			
CLASS 1	1149	619	85.6%
CLASS 2	17	31	-45.2%
Unknown	30	41	-26.8%
Jet Traffic			
Operations	0	1	-100.0%
Taking off Rwy 27	0	1	-100.0%
Landing Rwy 27	0	0	-
Largest aircraft			

Monthly Operations Report for December 2025 at KKKU			
	Jan 2024	Jan 2023	Year over Year Change
Average seat count per jet	0	6	-100.0%

Most Active Aircraft				
Registration	Manufacturer	Model	Operations	Percentage of Total
N323FS	CESSNA	172P	136	33.7%
N7843U	CESSNA	172F	88	21.8%
N4524Q	GULFSTREAM AMERICAN CORP	AA-5B	58	14.4%
N8478U	CESSNA	172F	49	12.1%
N56WB	PIPER	PA-28-180	38	9.4%
N9551J	PIPER	PA-28-180	30	7.4%
N5506G	CESSNA	150J	27	6.7%
N8334N	PIPER	PA-32-301	23	5.7%
N1310M	COLUMBIA AIRCRAFT MFG	LC41-550FG	21	5.2%
N802HS	PILATUS AIRCRAFT LTD	PC-12	20	5.0%

Most Active Owners		
Name	Operations	City
FREDERICKS HALL AVIATION LLC	140	MINERAL
HARKRADER AVIATION LLC	88	LOUISA
KELLEY AIRCRAFT LLC	51	WEYERS CAVE
RIG AVIATION LLC	49	TROY
RIGNEY TIMOTHY D	40	TROY
KEMP RICHARD	30	MANASSAS
SANCHEZ CARLOS D	27	ASHBURN
N8334N LLC	23	LOUISA
N1310M LLC	21	PALMYRA
HOLSTEN GUY V	20	MINERAL

Owner Locations		
City	Operations	Percentage of total
MINERAL	118	29.2%
LOUISA	92	22.8%
TROY	81	20.0%
Unknown	69	17.1%
RICHMOND	44	10.9%

Aircraft Type

Unknown
Fixed wing multi engine
Fixed wing single engine
Rotorcraft



Engine Type

Unknown
4 Cycle
Reciprocating
Turbo-prop
Turbo-shaft



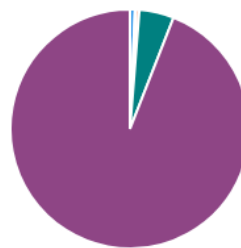
Number of Engines

1
2
Unknown



Weather

Unknown
IFR
LIFR
MVFR
VFR



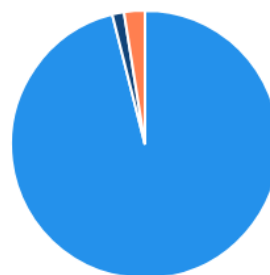
Local/Transient

Local
Transient

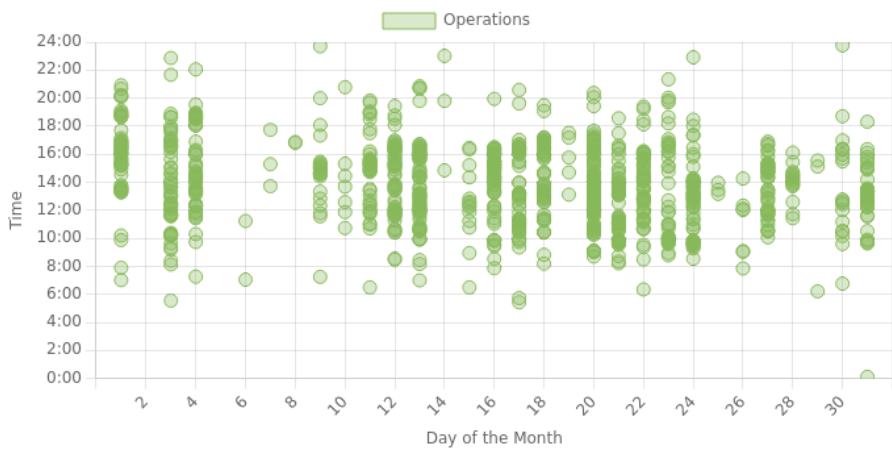


Weight Class

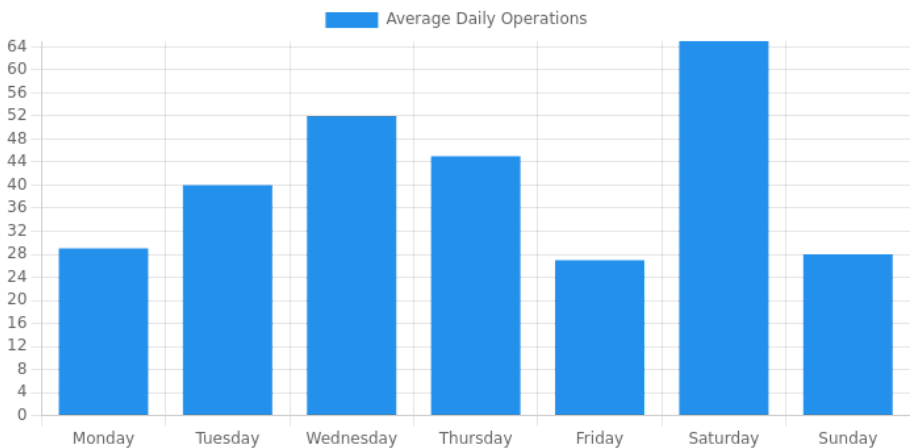
CLASS 1
CLASS 2
Unknown



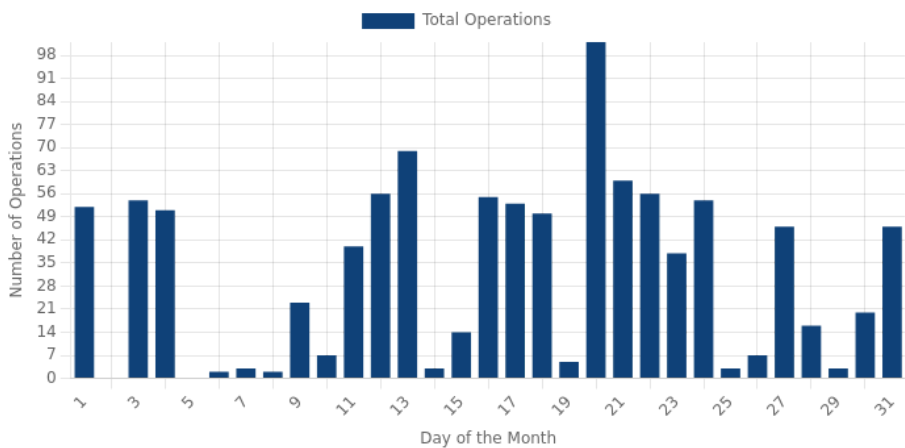
Time of Day



Day of the Week

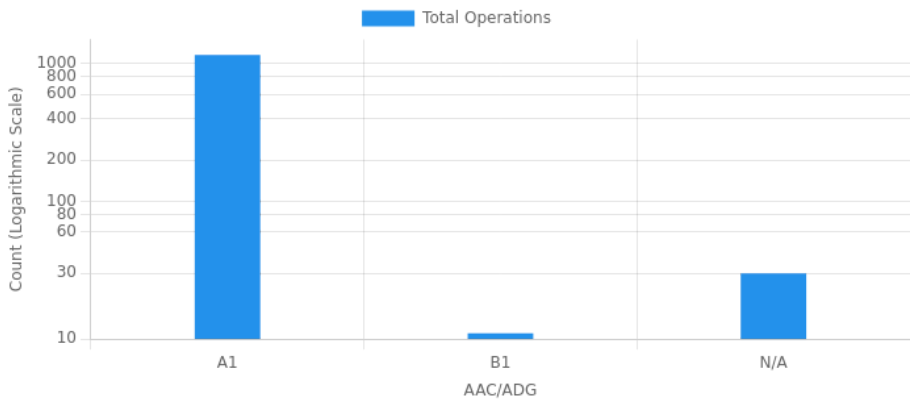


Daily Operations



Operations by AAC/ADG						
	I	II	III	IV	V	VI
A	1155	0	0	0	0	0
B	11	0	0	0	0	0
C	0	0	0	0	0	0
D	0	0	0	0	0	0
E	0	0	0	0	0	0

AAC/ADG Distribution



Report generated by RunwayStats.com on January 6, 2026, 12:11am CST